



SUMMER GUIDE · STUDENTS &amp; PARENTS

# Welcome to TimeBack.

The platform your child uses at Alpha, now continuing at home.

## WHAT'S INSIDE

---

This guide is the companion to the Timeback summer overview video. It walks students through logging in, mastery, placement, XP and Alphas, the Emporium, tests, and how to book a Limitless Meeting with a guide. It then walks parents through the dashboards and weekly reports that show how learning is going.

Because this is your second week or later, a couple of things open up: the full subject set (beyond math and reading) and placement tests, if your student didn't test out in week one.

### NEED HELP?

Your single front door for anything TimeBack: [support.alpha.school](https://support.alpha.school)

• Overview

---

# What's in this guide

## PART 1 · FOR STUDENTS

---

<b>B</b>	Logging In	4
<b>C</b>	How TimeBack Works	5
<b>D</b>	What's New This Week	6
<b>E</b>	Goals, XP & Rings	7
<b>F</b>	Alphas & the Emporium	8
<b>G</b>	Tests, Test Out & Proctoring	9
<b>H</b>	Limitless Meetings	10
<b>I</b>	Getting Unstuck	11

## PART 2 · FOR PARENTS

---

<b>J</b>	Parent View & Access	13
<b>K</b>	Home Dashboard	14
<b>L</b>	Student Details	15
<b>M</b>	Learning Metrics & Report	16
<b>N</b>	Academic Snapshot	17
<b>O</b>	End of Week Report	18

## APPENDIX

---

•	Video Overview	19
•	Master Links	20

PART 1

# For Students

Everything your student needs to log in, learn, earn Alphas, and book time with a guide. Walk through this together the first time you sit down with Timeback at home.

## B Logging In

# Logging In

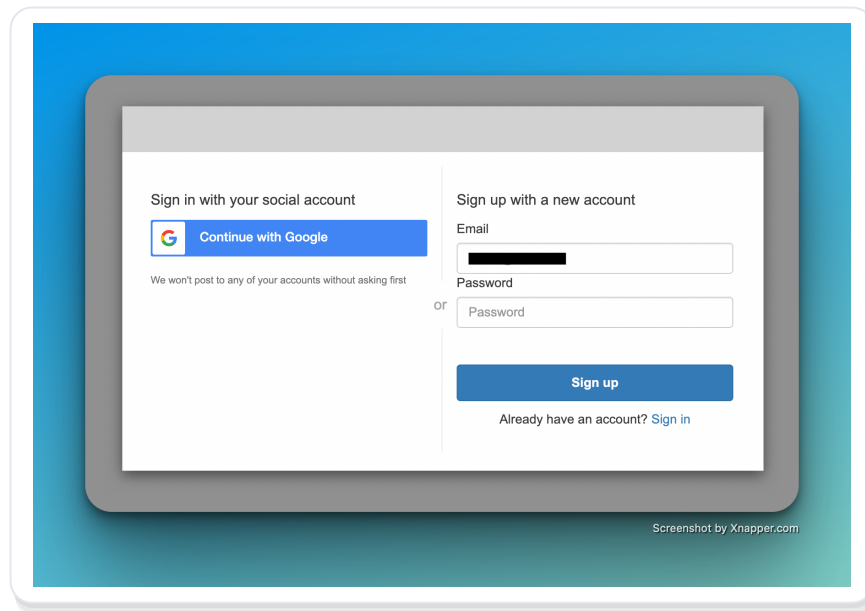
Open Chrome and head to [alpha.timeback.com](https://alpha.timeback.com). You'll see the login screen below. Click Continue with Google, or sign in with a password. Use the email you have on file with Alpha School.

**DEFAULT LOGIN CONVENTION**

**Email**      first.lastname@alpha.school

**Password**   iloveschool

\* Exceptions: Alpha Anywhere students and any student who shares the same name as another student. In those cases, don't guess. Head to [support.alpha.school](https://support.alpha.school) for your specific login.



# Mastery-Based Learning

TimeBack is mastery-based. That means your child moves forward by mastering material, not by the calendar. Spend more time where it's hard. Move fast where it's easy. You master a level by scoring high, 90% or above.

For parents: when kids work at their right level, not their grade level, they consistently outperform peers.

**1****MASTER, DON'T CALENDAR**

Progress by mastering material, not by the week on the calendar.

**2****90% IS THE BAR**

Score 90% or higher on a level's test to move up to the next level.

**3****RIGHT LEVEL, NOT GRADE**

Learning at your right level compounds fast. Kids outperform peers.

Learn more: [Effective Mastery-Based Learning](https://support.alpha.school) [support.alpha.school](https://support.alpha.school)

D What's New This Week

---

# Full Subjects & Placement

This is your second week or later, so two things open up. First, the full subject set is now live. In week one you saw math and reading only. Now you'll also see Language, Science, and the rest of your subjects on the Home page. More subjects showing up is expected.

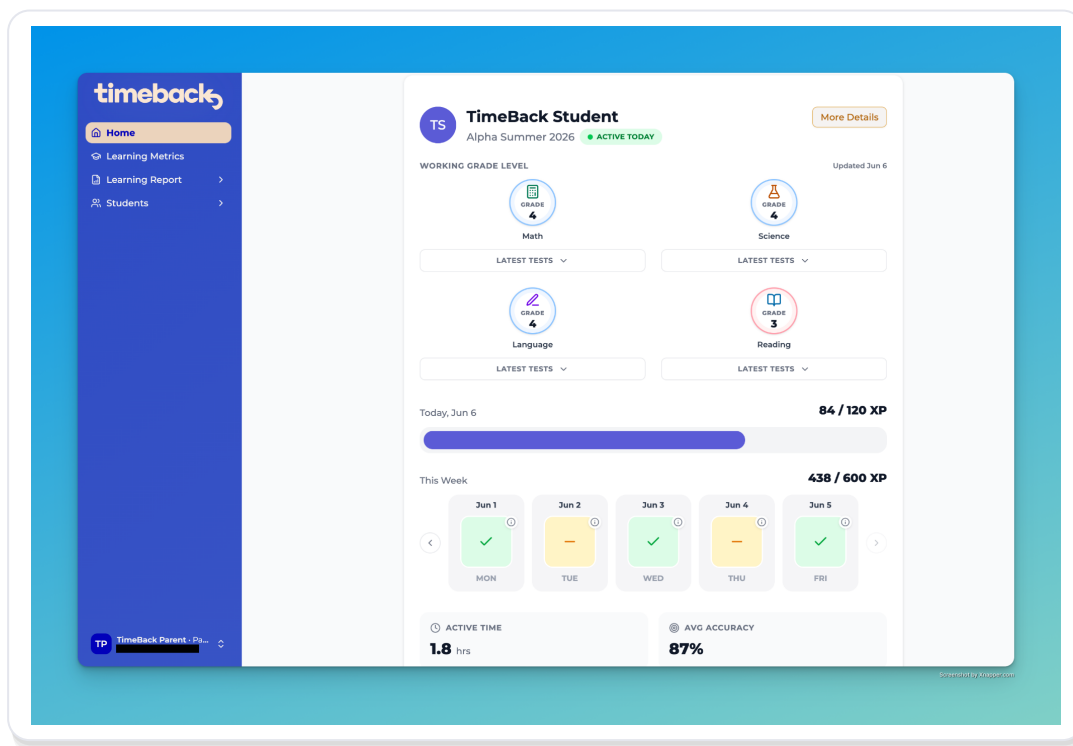
Second, if you didn't test out during week one, placement tests begin this week by default. Placement is automatic, uses MAP to start you at the right level, is done per subject (different subjects can start at different grades), and is quick (just a few minutes for the early grades). Score 90% or higher on a placement test and you move up to the next level's test.

[Learn more: Placement Tests Quick Start](#)

# Goals, XP & Rings

XP is an engaged minute. When you're actively learning, you're earning XP. Your Home page shows per-subject and per-app goals for the day and the week, plus your overall daily target of ~120 XP, displayed as rings you can close.

Goals are set by the student together with your parent and guide. Use the subject tabs at the top of Home (All Subjects, Reading, FastMath, Math) to focus on one subject at a time.



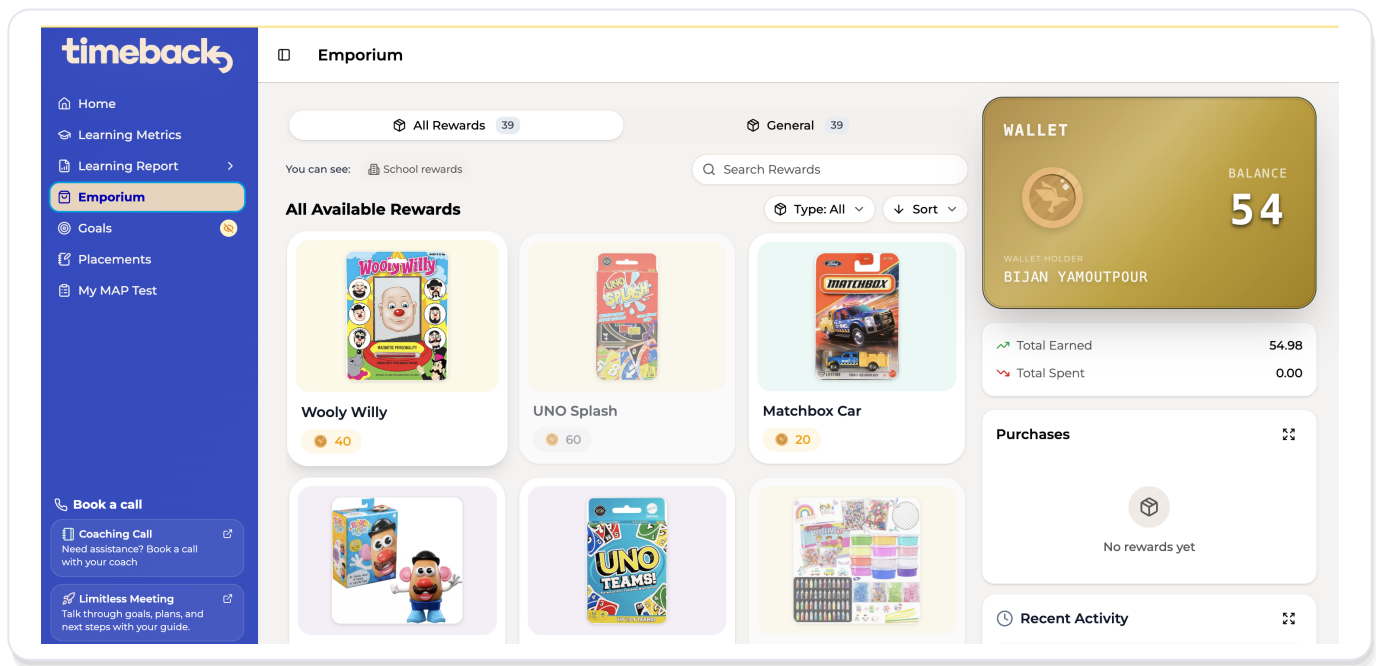
F Alphas & Emporium

# Alphas & the Emporium

XP turns into Alphas, the same Alphas you earned on campus. Your balance carries over. Nothing resets.

20 XP = 1 Alpha. Close all your rings for the day and earn a +5 Alpha bonus. Ace a mastery test at 100% and earn a 100 Alpha reward.

Spend Alphas in the Emporium, right inside Timeback. Open it from the chest icon on Home or the Emporium tab in the sidebar. The Wallet card shows your Alpha balance, Total Earned, and Total Spent. Every reward card shows its Alpha price.

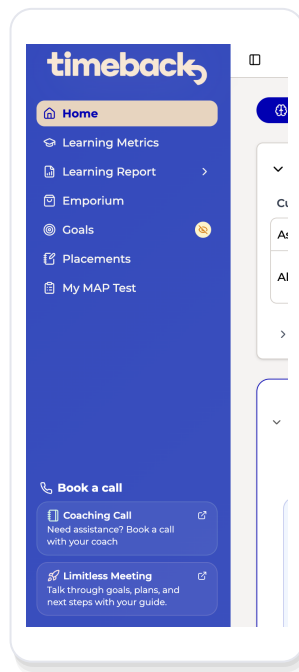


# Tests, Test Out & Proctoring

Tests assign automatically at the end of a course. You can also press Test Out on any subject card on Home to skip ahead. Test Out is also the way to trigger early placement from week one.

To actually take a test, book a mastery test proctoring call: click Book a call in the lower-left, then fill in your name, Alpha email, the phrase "mastery test proctoring", the subject, and the time.

Mastering a level means scoring 90% or higher. A perfect 100% earns 100 Alphas.



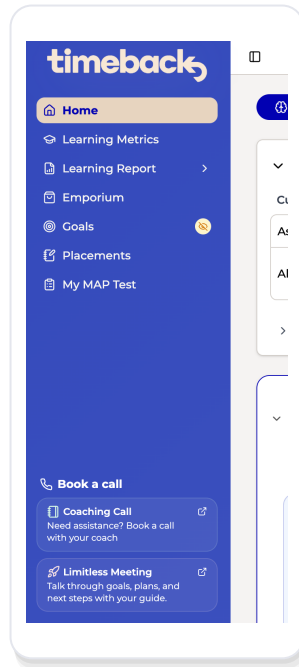
## H Limitless Meetings

# Book a Limitless Meeting

A Limitless Meeting is your weekly one-on-one with a virtual Alpha guide. Use it to talk through challenges, set goals, and stay motivated. It's optional but strongly encouraged.

Where to find it (this is the part most families miss): in the lower-left corner of the sidebar there's a Book a call section. Click Limitless Meeting (right next to Coaching Call) and walk through the booking flow.

If you can't find the button, that's the whole point of this page. Look at the screenshot: the button lives at the bottom of the left sidebar.



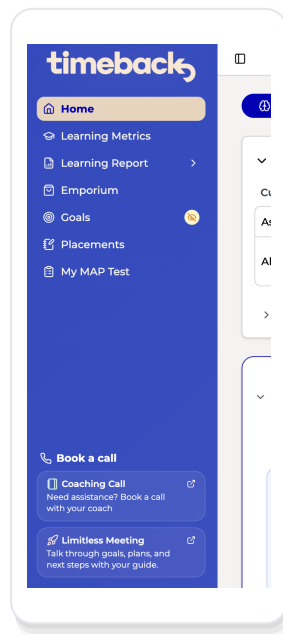
## I Getting Unstuck

# Getting Unstuck

Two different situations, two different buttons.

Something is broken or you can't log in? Click the ? icon in the bottom-right of any Timeback screen. It always opens [support.alpha.school](https://support.alpha.school), where you can search help articles or start a support ticket.

A concept isn't clicking? Book a Coaching Call from the Book a call section in the lower-left of the sidebar (right next to Limitless Meeting).

**NEED HELP?**

Your single front door for anything TimeBack: [support.alpha.school](https://support.alpha.school)

PART 2

# For Parents

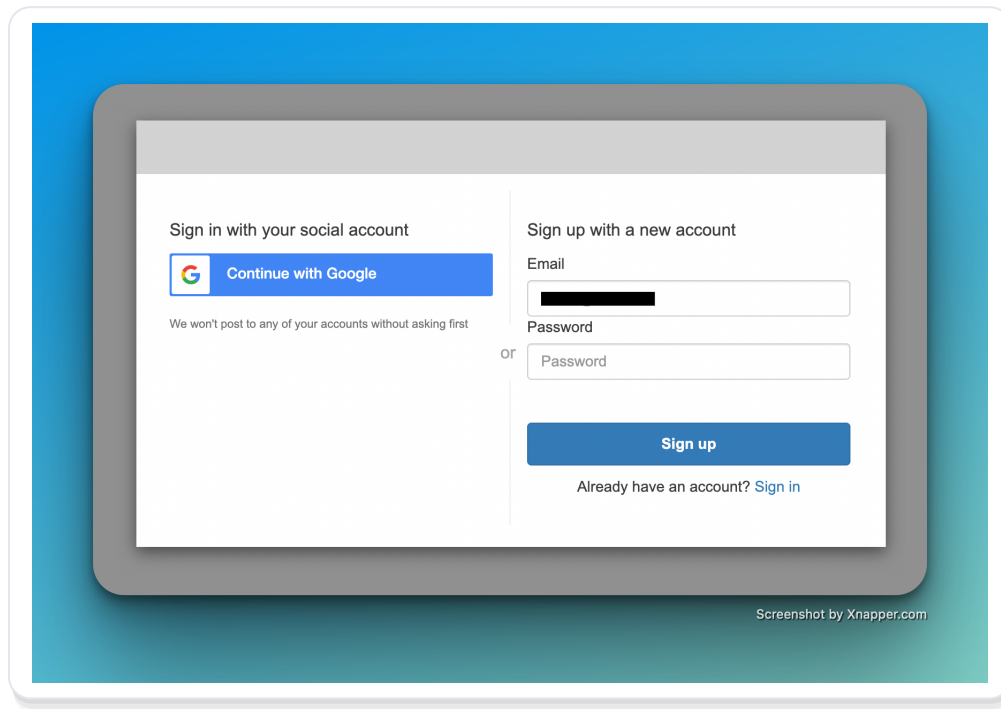
Your view into how learning is going. The Home dashboard, the Student Details tabs, the Learning Metrics, the Academic Snapshot, and the End of Week Report. If anything doesn't add up, [support.alpha.school](https://support.alpha.school) is your front door.

J Parent Access

# Parent View & Access

Parents get their own view of Timeback. Log in with the email you have on file with Alpha School (probably whatever inbox you found this guide in).

Can't get in? Head to [support.alpha.school](https://support.alpha.school). Don't guess your way through login screens. The parent-access path is set up per family.



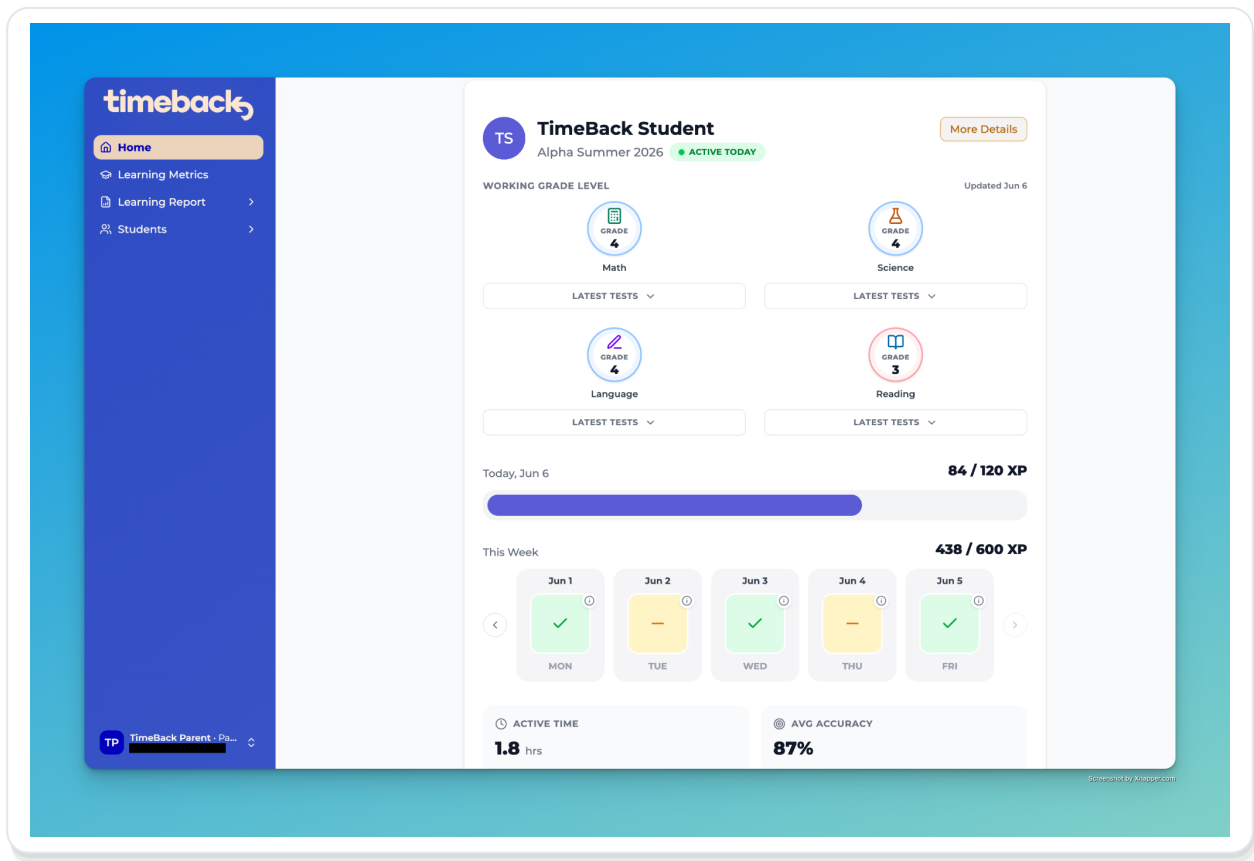
**NEED HELP?**

Your single front door for anything TimeBack: [support.alpha.school](https://support.alpha.school)

K Home

# Home Dashboard

The Home page is the quickest way to see how your child is doing right now. Parents can see daily and weekly XP progress, whether their child has been active today, how their week is shaping up, and an at-a-glance subject snapshot that makes it easy to spot strengths and areas that may need a little more attention.



# Student Details

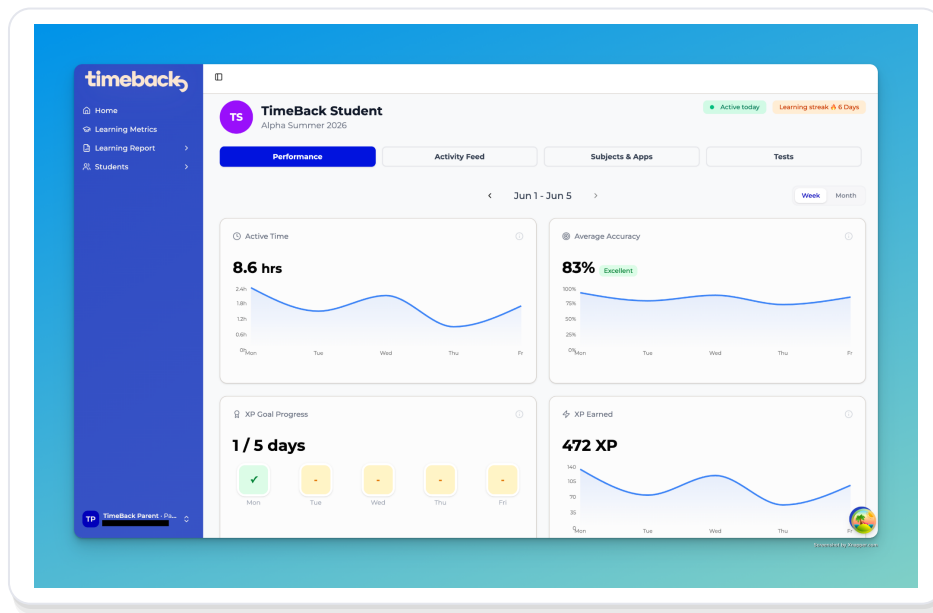
When you navigate to your student in the sidebar, you can take a closer look at their learning through four tabs:

**Performance** shows active learning time, average accuracy, XP earned, and progress toward daily XP goals.

**Activity Feed** presents a running timeline of lessons, quizzes, and learning activity, along with timestamps, accuracy, and XP-earned markers.

**Subjects & Apps** shows the subjects your child is working in and the learning apps being used.

**Tests** shows completed assessments and test history all in one place.

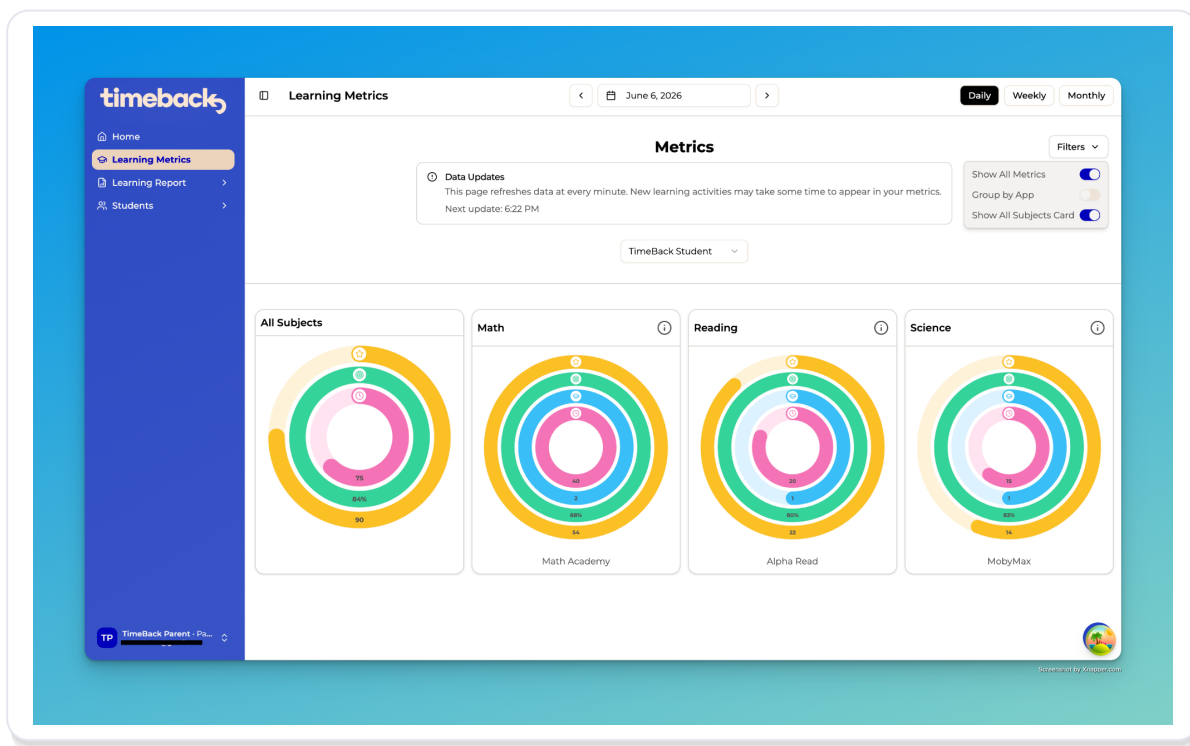


M Learning Metrics

# Learning Metrics & Report

Learning Metrics turns day-to-day learning into a clearer picture of progress. Switch between daily, weekly, and monthly views to see XP earned, time spent learning, accuracy, and subject progress.

My Learning Report is the live academic detail: how your child's current work lines up with grade-level expectations, how much progress they've made in their courses, and what assessments and mastered levels reveal. (The weekly published End of Week Report is separate. See the next section.)



## N Academic Snapshot

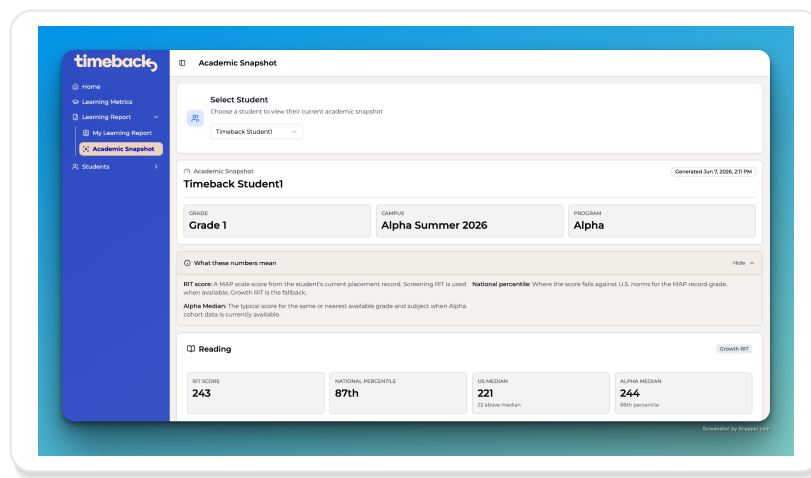
# Academic Snapshot

Where to find it: Learning Report, then Academic Snapshot.

The top tiles show Subjects Measured (a count) and your child's lowest percentile. Below that, each subject is its own card with its latest MAP results: RIT, national percentile, US median, and Alpha median. The Grade Mastery bar uses colors: green for mastered, red for a gap, and black for the current grade.

Heads up (this trips people up): each subject card can be collapsed. Scroll down and expand each one. The first subject opens by default, but a second card (like Math) might sit collapsed at the very bottom. The Subjects Measured number tells you how many to look for.

How to read the medians: the US median is the national grade average. Above it means at or above grade level. The Alpha median is a higher bar our students reach over time. Above the national median but below the Alpha median is normal, especially on a first placement. A first placement is a baseline that firms up after the next check-ins, not a final grade.



○ End of Week Report

# End of Week Report

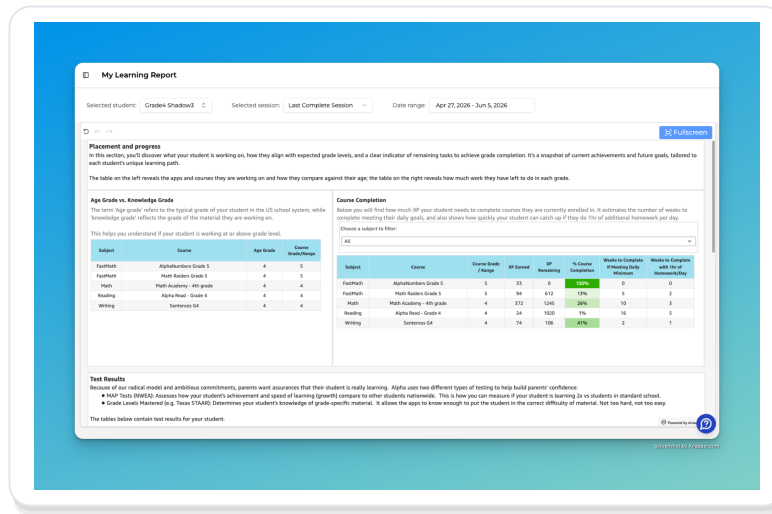
Where to find it: Learning Report, then End of Week Report. Select your student, pick a week, and click View. Reports post by Sunday.

This is your Weekly Accountability Report, built on the three commitments. Each section pairs the data with your guide's read (Observation, Analysis, and Lever):

**Love of School** the child's end-of-week survey plus the guide's read.

**Learn 2x in 2 Hours** per-subject snapshot: lessons, XP, accuracy, focus, MAP RIT, skills. A year grade-progression bar. Remember, a first placement is a baseline.

**Life Skills** this week's workshops with focus tags, pass status, and the guide's read.



[V](#) Video Overview

# Watch the Summer Overview

This guide follows the topic order of the Timeback summer overview video. Watch the video for a live walkthrough of everything in this guide: logging in, mastery and placement, XP and Alphas, the Emporium, tests, Limitless Meetings, and the parent dashboards.

The video thumbnail displays the following information:

- 20 XP = 1 Alpha**
- Fill your rings + 5 Alpha bonus**
- 120 XP daily target**
- Mastery Test = 100 Alphas**
- Emporium**  
Earn → track → spend. Same game, now inside Timeback.
- 20XP = 1 Alpha** (vertical banner)

WATCH ON YOUTUBE

**Timeback Summer Overview: Logging In, Navigation & Features**<https://youtu.be/seYq-JsA04w>

- Master Links

# Bookmarks & Resources

Keep these links handy for the summer. When in doubt, [support.alpha.school](https://support.alpha.school) is your single front door.

## Help & Support

The single front door for TimeBack all summer.

<https://support.alpha.school>

## Log In to Timeback

The student login page.

<https://alpha.timeback.com>

## Video Overview

The companion summer overview video.

<https://youtu.be/seYq-JsA04w>

## Placement Tests

Quick start guide to placement tests.

<https://support.alpha.school/article/133839-quick-start-guide-placement-tests-in-timeback>

## Mastery-Based Learning

How mastery-based learning works.

<https://support.alpha.school/article/31506-achieving-effective-mastery-based-learning>